

Don't forget we can still offer our design service!

We have made a few changes to keep to the guidelines.

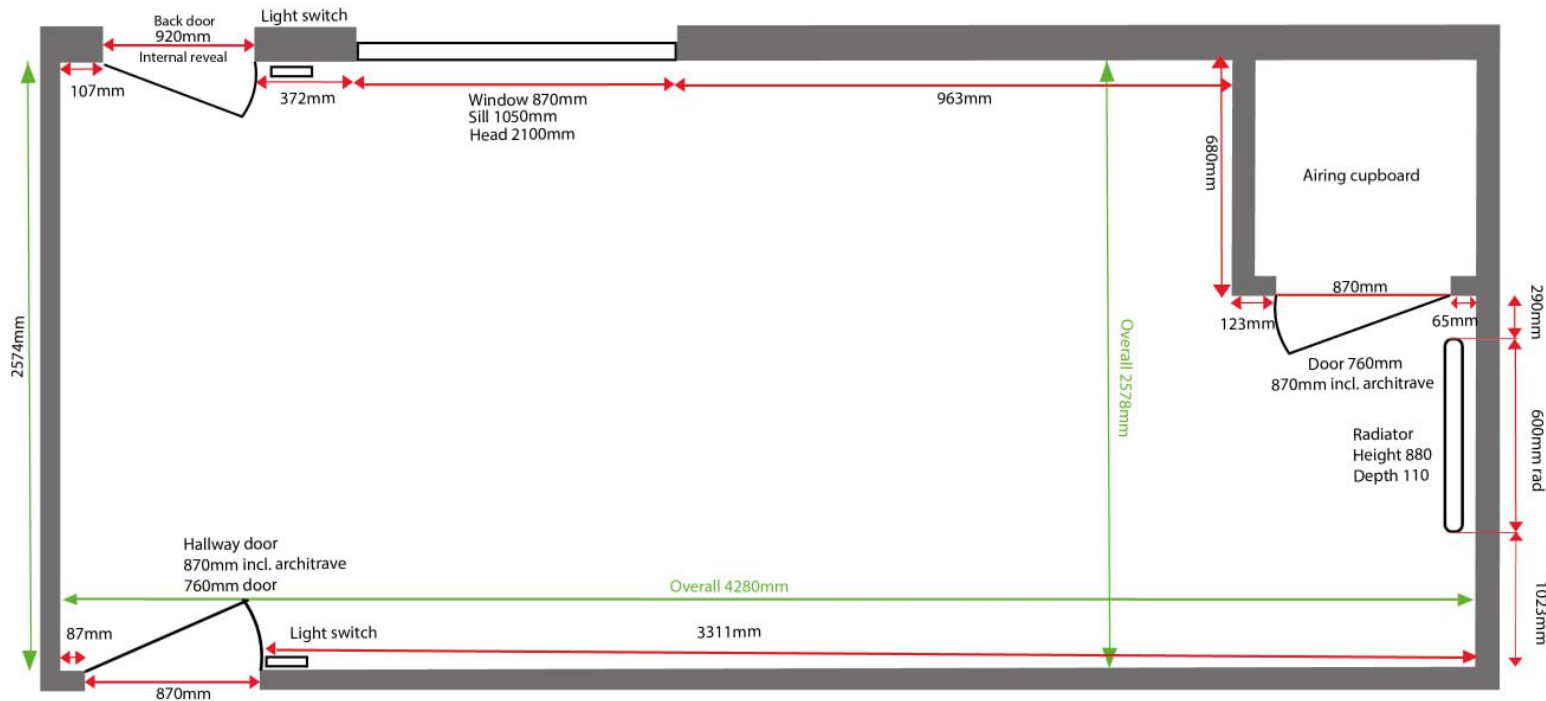


- 1 Download our example of how to measure your room accurately.
- 2 Download our blank sheet and measure your room and add your details.
- 3 Email us photos or scans of your completed plan or plans to sales@rgcole.co.uk
- 4 Our designer will call you to discuss your design requirements.

R G COLE 

Grays showroom tel: 01375 373941 Email: sales@rgcole.co.uk

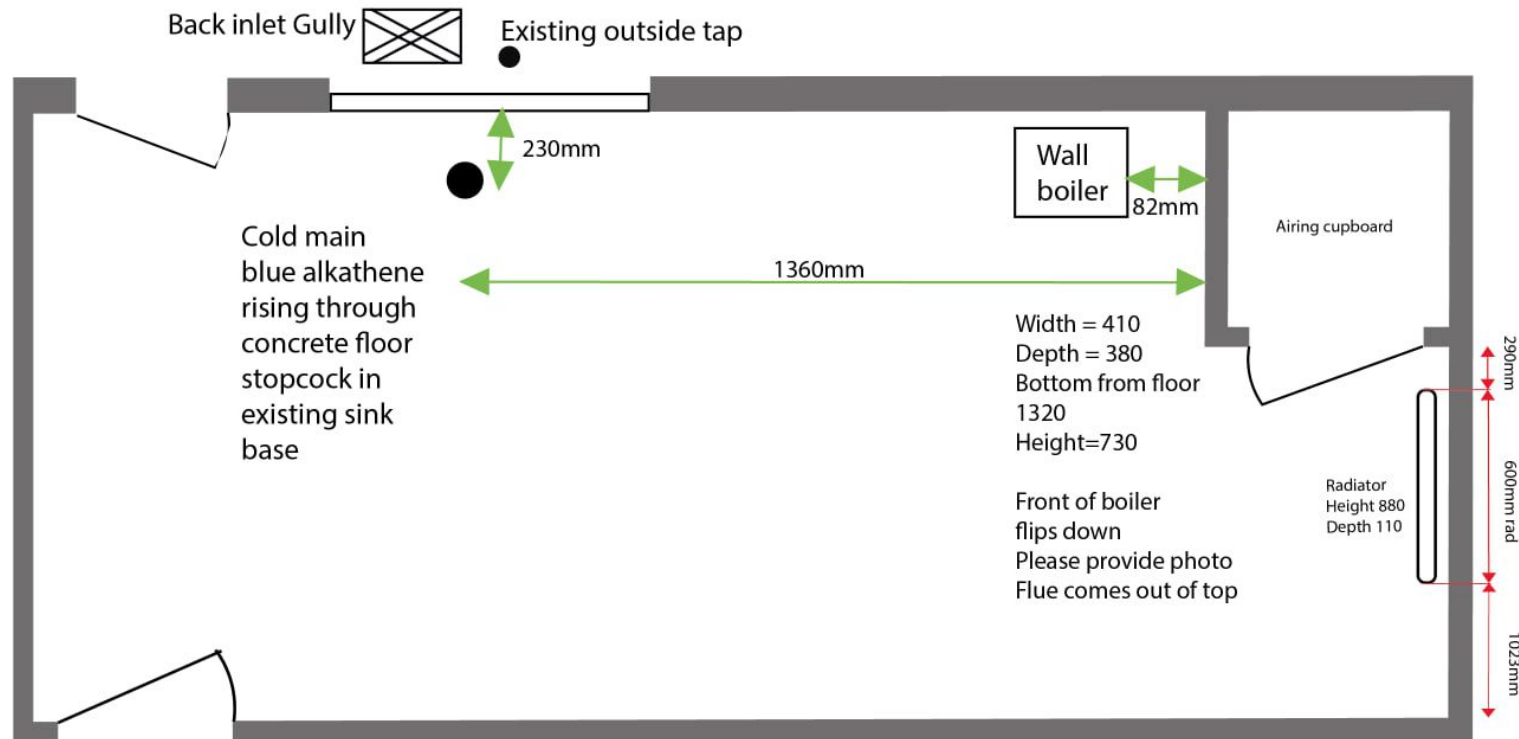
How to take accurate measurements for a room.



1. Note down the overall ceiling height
2. Sketch out the rough shape of the room.
3. Don't forget to measure from floor to windowsill and overall height. This measurement normally gets forgotten.
5. Include power points and where your water and gas services come in to the house.
6. Don't forget not to mix up units of measurement.

RG.COLE

Plumbing notes



1. Note down the overall ceiling height
2. Sketch out the rough shape of the room.
3. Don't forget to measure from floor to windowsill and overall height. This measurement normally gets forgotten.
5. Include power points and where your water and gas services come in to the house.
6. Don't forget not to mix up units of measurement.

RG.COLE



R · G · COLE

Email: sales@rgcole.co.uk

Tel: 01375-37394

Name
Address
.....
Postcode
Phone No:
Mobile:
Email:

DON'T FORGET: 1) Overall ceiling height 2) Sketch out a rough shape of the room 3) Work in a clockwise direction 4) Use ALL millimetres or ALL cms.
5) Take floor to windowsill heights for windows 6) Note down the positions of powerpoints and where your services come in i.e Gas, Water